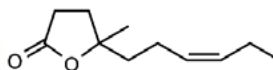


LACTONE OF CIS JASMONE™ (BRI #411-SUS)

PRODUCT INFORMATION

BRI Number: 411-SUS
CAS Number: 70851-61-5
FEMA Number: 3937
FLAVIS Number: 10.061
GB Number: Not approved



Molecular Weight: 182.26
Molecular Formula: C₁₁H₁₈O₂

SPECIFICATIONS

Minimum Purity: 97.0% (sum of isomers)
Main Isomer: 95.0% min.(cis)
Secondary Isomer: 0.1% - 5.0%(trans)

Appearance: Colorless to pale yellow liquid

Additives: Synthetic alpha tocopherol @ 0.10%

TECHNICAL

Log P: 2.81
Flash Point: 276°F (CC)
Boiling Point: 293.75 °C (EPI 4.0)
Vapor Pressure: 0.00137 mmHg (20C, EPI 4.0)

Solubility: H₂O=215.6mg/l @ 25°C;
soluble in alcohol.

Nature Identical: NO
Kosher: YES
Halal: YES

FLAVOR APPLICATION

Taste Description: Creamy, jasmine, peach.

Flavor Use: Useful in cream flavors and for adding rich jasmine notes to jasmine tea flavors. Also great for peach and coconut applications.

Suggested Use Level: 5 - 20 PPM

FRAGRANCE APPLICATION

Olfactive Description: A soft, jasmine, white floral aroma with creamy lactonic notes.

Fragrance Use: A sophisticated and clean jasmine absolute note. Has creamy, coconut, and tropical notes.

Suggested Use Level: Traces - 1.00%

Tenacity on Blotter: > 48 hours

STABILITY

pH	Base	Poor	Moderate	Good	Excellent
3	Fabric Softener			✓	
3.5	Antiperspirant			✓	
6	Shampoo		✓		
7	Dish Detergent			✓	
9	Liquid Detergent			✓	
7	Soy Wax-Burn Performance				✓